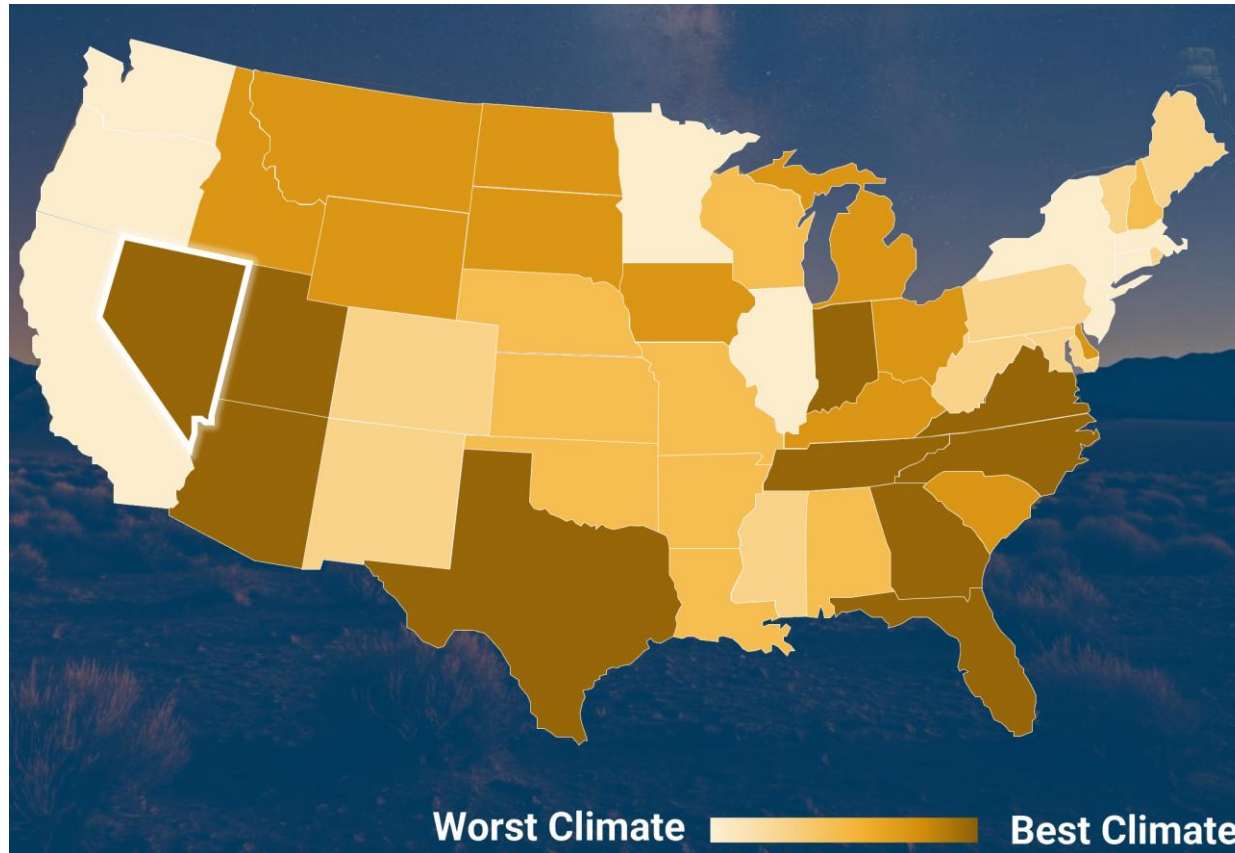


# NEVADA

A STRATEGIC PARTNER

# BEST U.S. STATES FOR BUSINESS



| Rank State |                |
|------------|----------------|
| 1          | Texas          |
| 2          | Florida        |
| 3          | Tennessee      |
| 4          | North Carolina |
| 5          | Georgia        |
| 6          | Indiana        |
| 7          | Utah           |
| <b>8</b>   | <b>NEVADA</b>  |
| 9          | Virginia       |
| 10         | Arizona        |
| 11         | South Dakota   |
| 12         | Ohio           |

Source: Chief Executive 2025 Best States for Business Rankings

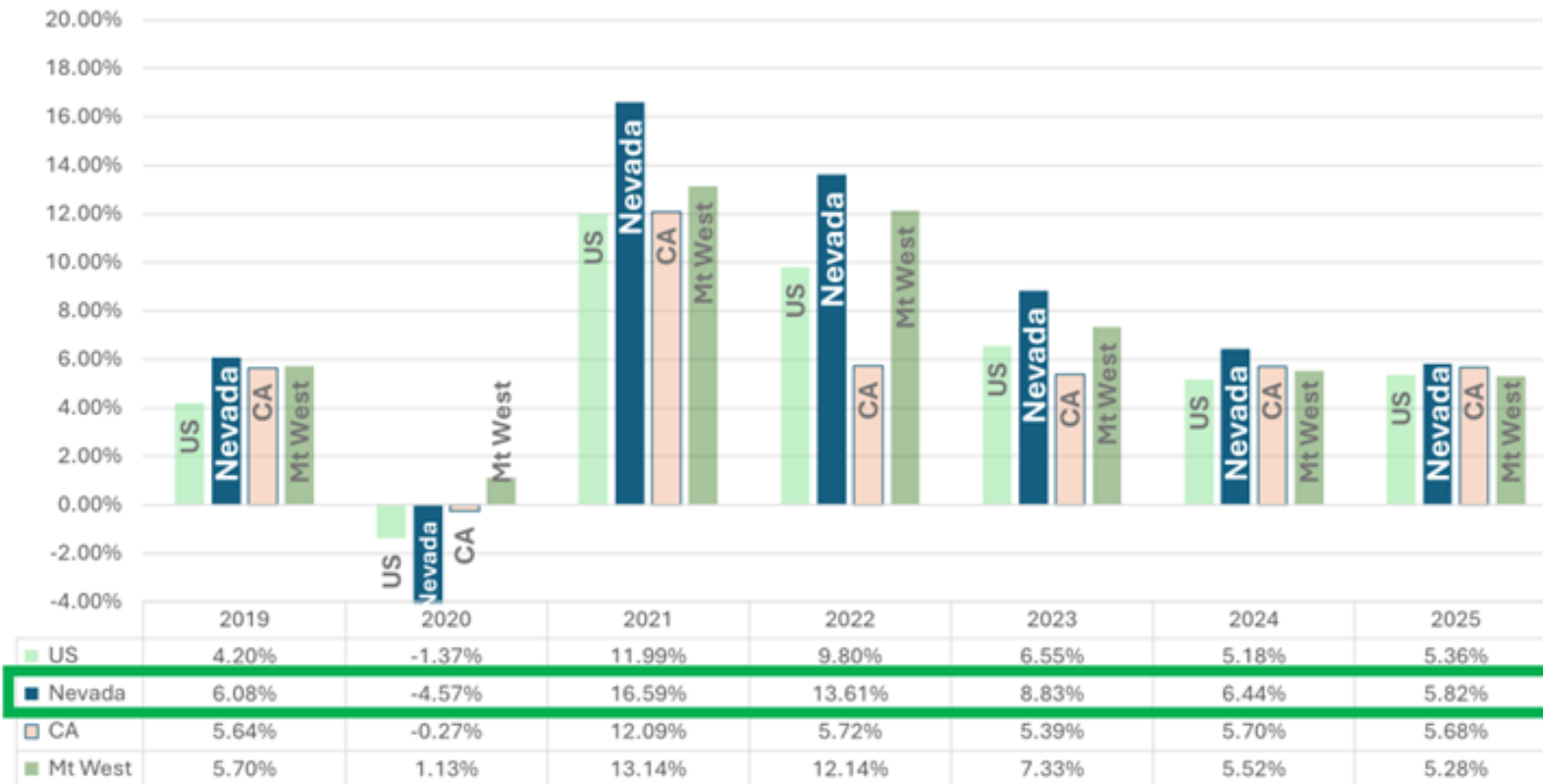
# COMPETITIVE TAX CLIMATE

- ✓ No Corporate Income Tax
- ✓ No Personal Income Tax
- ✓ No Inheritance or Gift Tax
- ✓ No Franchise Tax on Income
- ✓ No Estate Tax
- ✓ No Admission Tax
- ✓ No Unitary Tax
- ✓ Competitive Property Tax Rates
- ✓ Competitive Sales Tax Rates
- ✓ Minimal Employer Payroll Tax



# ECONOMIC GROWTH & STABILITY

## 2019-2025 GDP % GROWTH



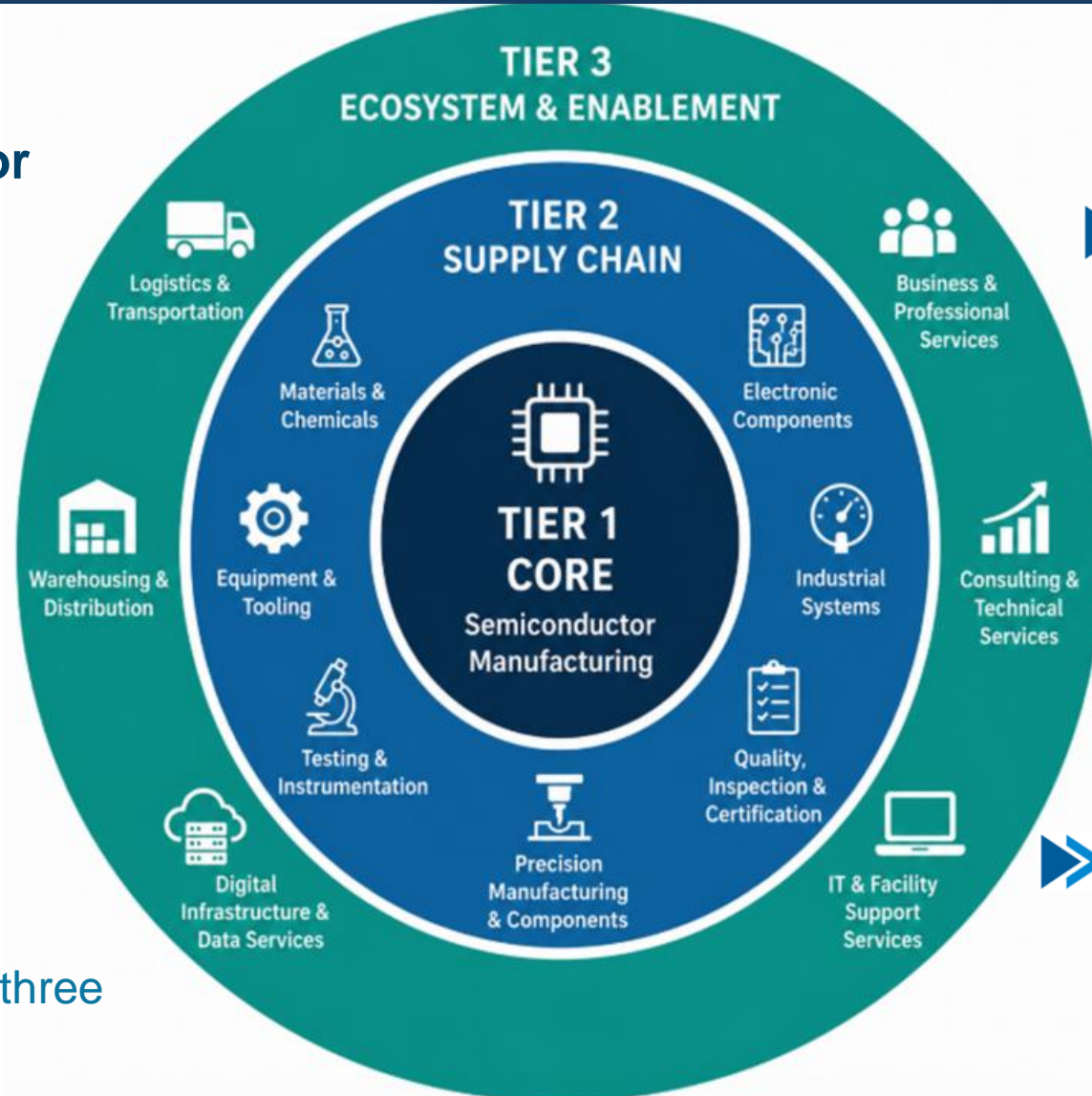
- Nevada's economic growth exceeds the entire United States, California, and 7 other peer states across the Mountain West.
- Nevada's largest growth industries are in Advanced Manufacturing, Logistics, and Information Technology.

# NEVADA'S SEMICONDUCTOR INDUSTRY

Nevada's semiconductor data:

➤ reflects the profile of an emerging cluster economy

➤ diversified across all three tiers



➤ outperforming national benchmarks

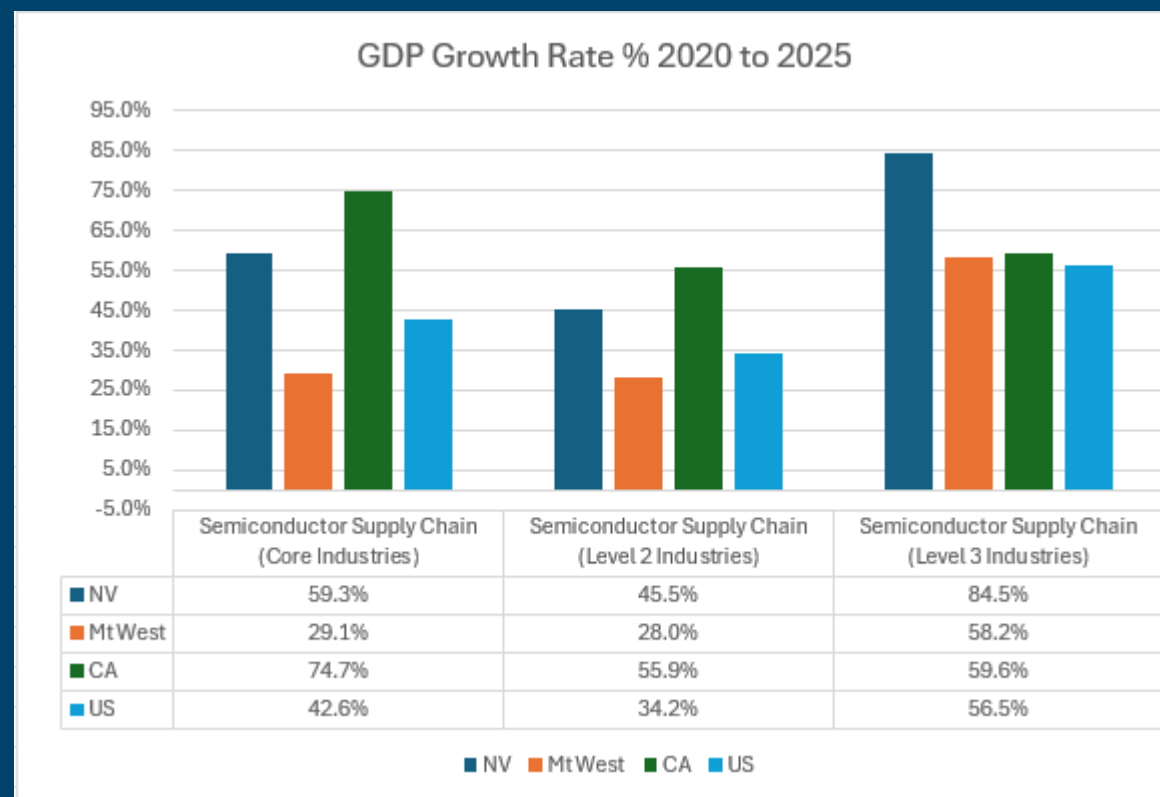
➤ generating compounding returns across the full supply chain stack

# ECONOMIC GROWTH

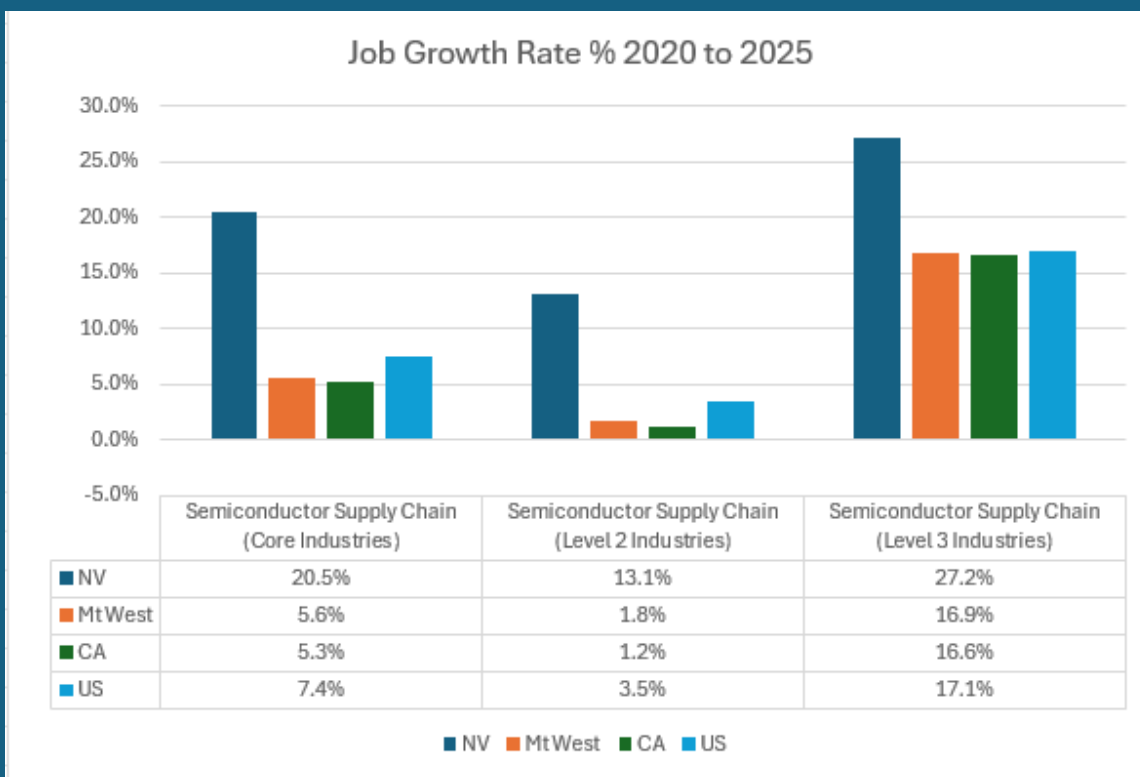
➤ Nevada's Tier 3 GDP growth **reflects rising economic density** across the enablement layer, logistics, IT infrastructure, precision services, indicating the state is **capturing value at every node of the supply chain**.

➤ Nevada's Tier 1 GDP growth exceeded the U.S. average by nearly 17 points, indicating the state is increasingly attractive to the semiconductor industry.

➤ Nevada's semiconductor supply chain is not only growing but also generating **above-average economic value** at every tier, from core manufacturing to the broader enablement ecosystem.



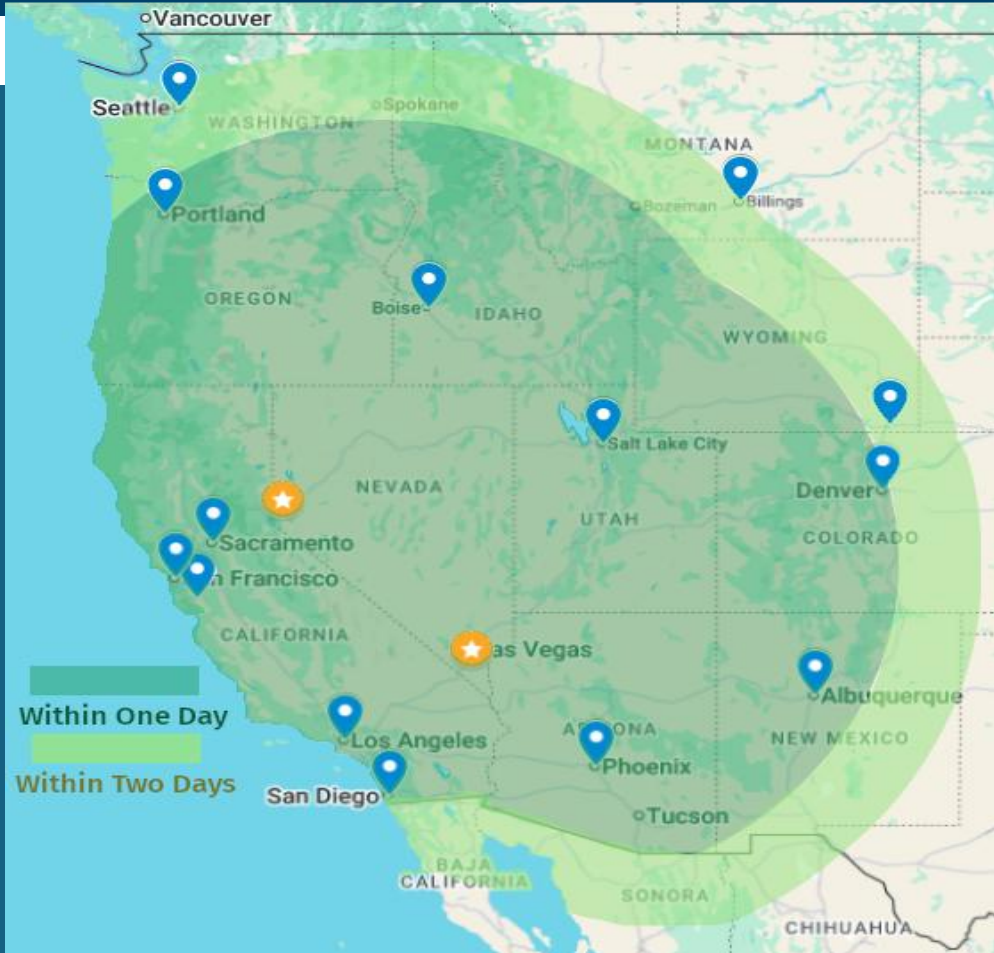
# STRATEGIC LOCATION



*Nevada's semiconductor supply chain grew at more than 3.5× California's rate in core industries and outpaced the nation at every level.*

- Nevada's 20.5% Tier 1 job growth signals **expanding manufacturing** at the core, a leading indicator of **broader supply chain investment** to follow.
- **Sustained growth** across all three tiers reflects an **emerging semiconductor ecosystem**, not isolated workforce gains in a single segment.
- Cross-tier outperformance of national benchmarks signals **structural momentum** and a **broad integration of industry**

# STRATEGIC LOCATION



## ➤ Gateway to the West

- Nevada's two population centers are within a single day of commercial trucking to 11 major U.S. markets.
- Accessing more than 64 million people.

## ➤ Market Access

- Capital and consumers in the Bay Area and Los Angeles, without the high costs.

## ➤ Transportation Assets

- Access to the I-80/I-15 corridors.
- 5 hours from Long Beach Port to Las Vegas.
- 4 hours from Port of Oakland to Reno.
- Union Pacific Rail Terminal in both northern and southern Nevada.

## ➤ Logistics Hub

- Attracted more than \$1 billion in logistics-related FDI.

# STATE FINANCING

## Standard Abatement

- Sales and use tax abatement on qualified capital equipment purchases, with reductions in the rate to as low as 2%.
- Modified Business Tax Abatement of 50% of the 1.17% rate on quarterly wages exceeding \$50,000.
- Personal Property Tax Abatement on personal property not to exceed 50% over a maximum of 10 years.

## Recycling = above standard abatement +

- Up to 50% abatement for up to 10 years on real and personal property for qualified recycling businesses.

## Aviation

- Sales and use tax abatement for up to 10 years on qualified capital equipment purchases, with reductions in the rate to as low as 2%.
- An abatement on personal property not to exceed 50% over a maximum of 10 years.

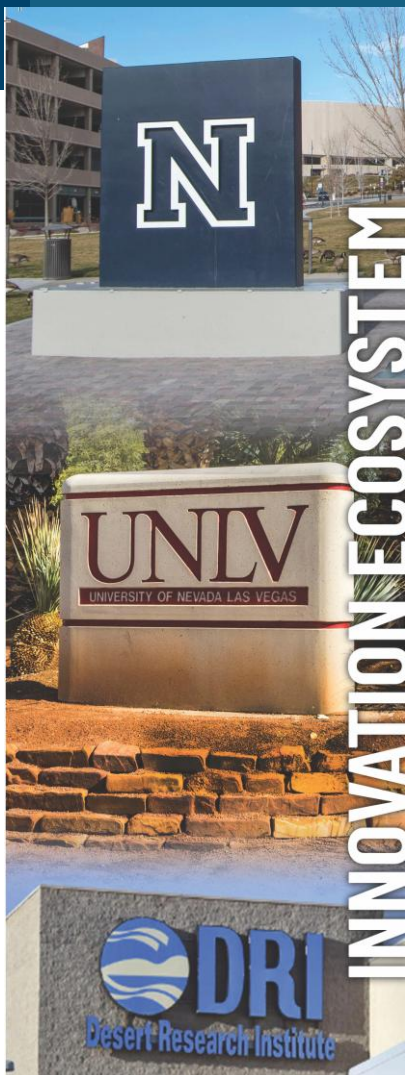
## \$1B Investment Abatement

- Sales and Use Tax Reduction – Depending on the county a company chooses to locate in, the reduced rate ranges between 4.6% and 6.125% for 15 years.
- MBT – 75% for 10 years.
- Property Taxes (Real and Personal) – 75% for 10 years.

## \$3.5B Investment Abatement

- Sales and Use Tax Reduction – Depending on the county a company chooses to locate in, the reduced rate ranges between 4.6% and 6.125% for 20 years.
- MBT – 100% for 10 years.
- Property Taxes (Real and Personal) – 100% for 10 years

# STARTUP & INNOVATION



## ➤ Use-Inspired Research

University of Nevada, Reno (UNR) and University of Nevada, Las Vegas (UNLV) and Desert Research Institute (DRI).

## ➤ University-Industry Connectivity

Nevada Center for Applied Research (NCAR), Innevation Center, and UNLV's Black Fire Innovation connect startups and industry to labs, accelerators, and real-world testbeds.

## ➤ Access to Capital

Nevada's SSBCI program including state-sponsored venture capital program co-invests alongside local funds such as StartUpNV, Desert Forge Ventures, and Reno Seed Fund.

## ➤ Skilled Workforce

Nearly \$10M invested through Workforce Innovations for a New Nevada (WINN) to expand training in strategic industries.

## ➤ Federal Recognition

Nevada is an official U.S. Economic Development Administration Tech Hub & National Science Foundation Engine.

# WHERE BUSINESS MEETS LIFESTYLE



Images from Travel Nevada

# CONTACT US:

## PHONE

1-775-687-9900

## WEBSITE

[www.goed.nv.gov](http://www.goed.nv.gov)

## E-MAIL

[goed@goed.nv.gov](mailto:goed@goed.nv.gov)

## ADDRESS

**Carson City:** 808 West Nye Lane, Carson City, NV 89703

**Las Vegas:** 1 State of Nevada Way, 4<sup>th</sup> Floor, Las Vegas, Nevada 89119

